

- NOTES:
1. FOOT PLACEMENT DIMENSIONS MUST BE VERIFIED BASED ON FIELD CONDITIONS AND ACTUAL INSTALL
  2. MAXIMUM SLOPE-1:12(8.33%)
  3. MAXIMUM CROSS SLOPE-1:48 (1/4"/FOOT)
  4. ALL RAMPS & PLATFORMS 36" AND OVER ELEVATION REQUIRE CROSS BRACING

<b>national ramp</b>   <b>COMMERCIAL ACCESS</b>	
Project:	Elevation: 30 Inches Length: 30 Feet
Customer:	Width: 54 Inches
	Revision:      Date: 10/2/19
<small>PROPRIETARY AND CONFIDENTIAL COPYRIGHT NATIONAL RAMP. ALL RIGHTS RESERVED. ALL TEXT AND IMAGES CONTAINED IN THIS DOCUMENT ARE PROPRIETARY AND MAY NOT BE SHARED, MODIFIED, DISTRIBUTED, REPRODUCED, OR REUSED WITHOUT THE EXPRESS WRITTEN PERMISSION OF NATIONAL RAMP.</small>	Drawn:      Approved: PM
	Scale: 1:50      Sheet 1 of 3

8 7 6 5 4 3 2 1

F

F

E

E

D

D

C

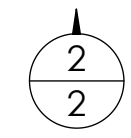
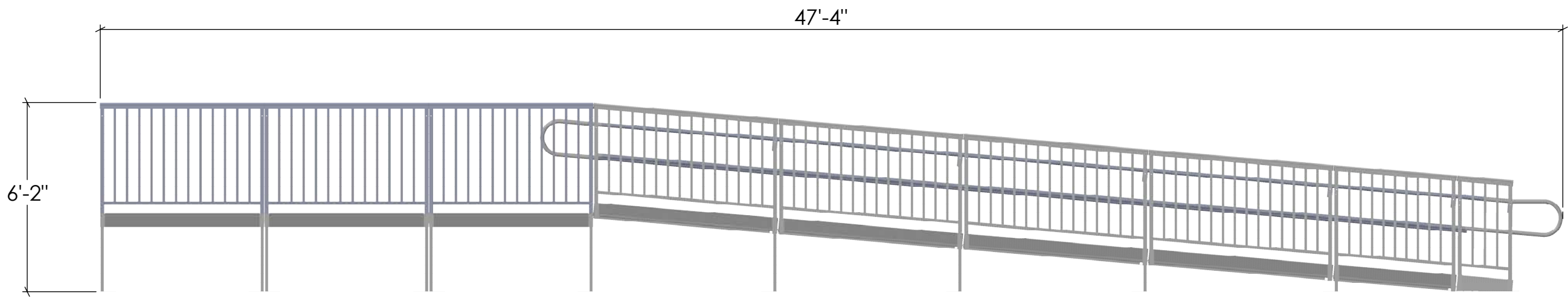
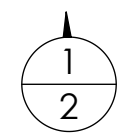
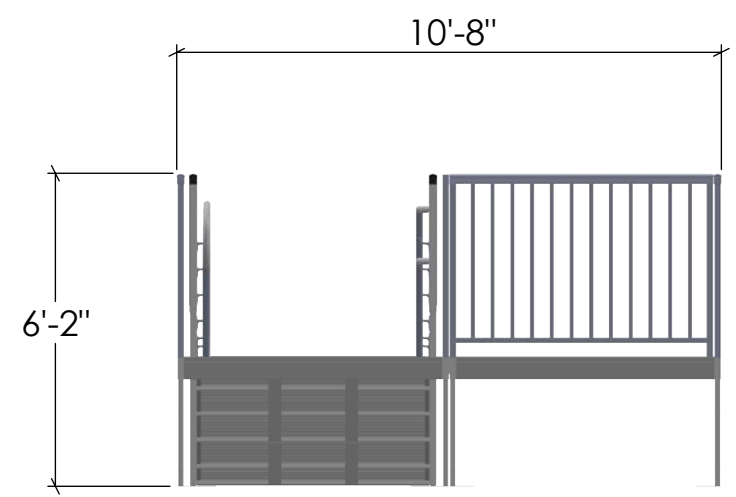
C

B

B

A

A

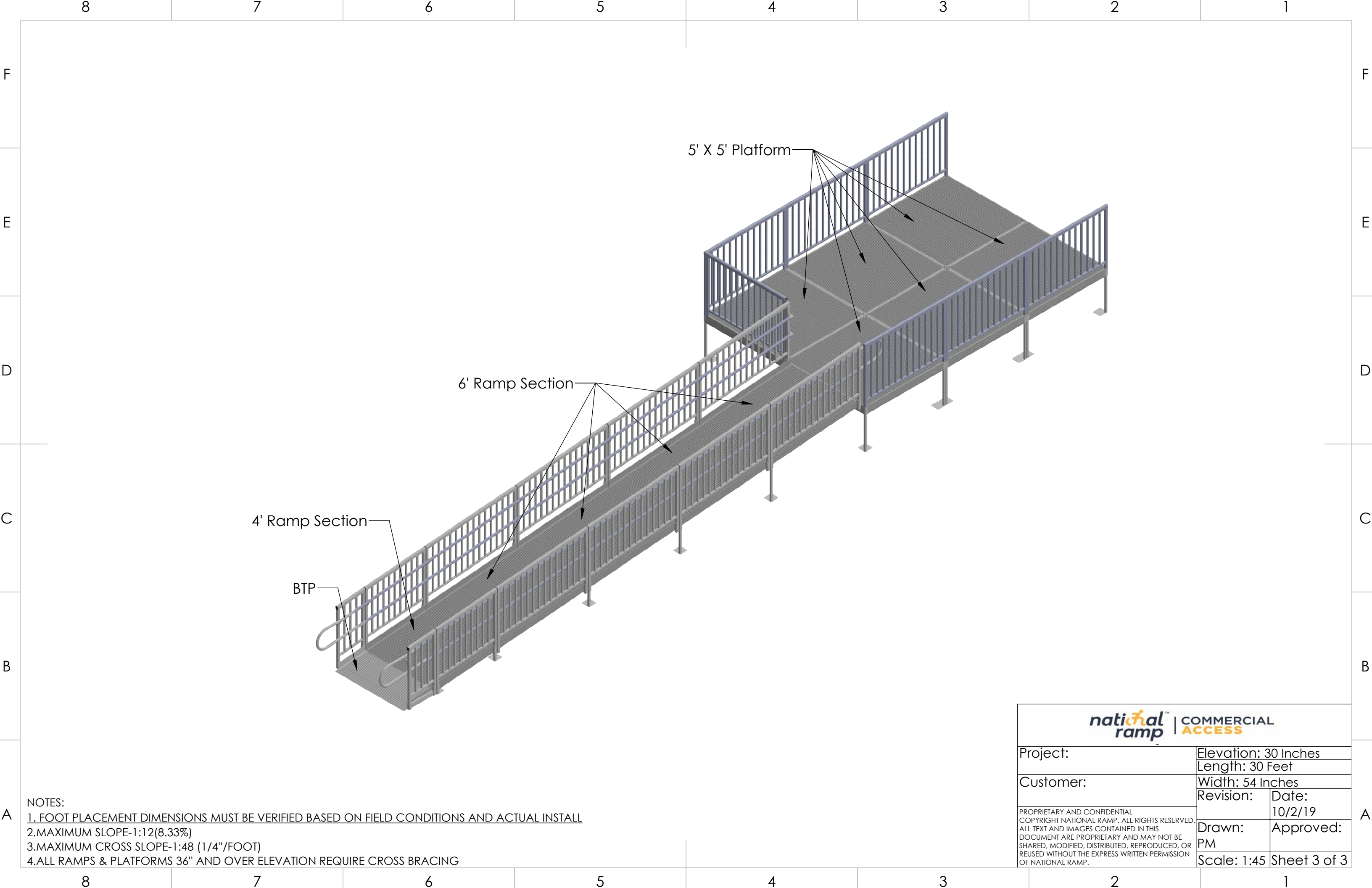


**national ramp** | **COMMERCIAL ACCESS**

Project:	Elevation: 30 Inches	
	Length: 30 Feet	
Customer:	Width: 54 Inches	
	Revision:	Date:
		10/2/19
	Drawn:	Approved:
	PM	
	Scale: 1:45	Sheet 2 of 3

- NOTES:
1. FOOT PLACEMENT DIMENSIONS MUST BE VERIFIED BASED ON FIELD CONDITIONS AND ACTUAL INSTALL
  2. MAXIMUM SLOPE-1:12(8.33%)
  3. MAXIMUM CROSS SLOPE-1:48 (1/4"/FOOT)
  4. ALL RAMPS & PLATFORMS 36" AND OVER ELEVATION REQUIRE CROSS BRACING

8 7 6 5 4 3 2 1



- NOTES:
1. FOOT PLACEMENT DIMENSIONS MUST BE VERIFIED BASED ON FIELD CONDITIONS AND ACTUAL INSTALL
  2. MAXIMUM SLOPE-1:12(8.33%)
  3. MAXIMUM CROSS SLOPE-1:48 (1/4"/FOOT)
  4. ALL RAMPS & PLATFORMS 36" AND OVER ELEVATION REQUIRE CROSS BRACING

<b>national ramp</b>   <b>COMMERCIAL ACCESS</b>	
Project:	Elevation: 30 Inches Length: 30 Feet
Customer:	Width: 54 Inches
<small>PROPRIETARY AND CONFIDENTIAL COPYRIGHT NATIONAL RAMP. ALL RIGHTS RESERVED. ALL TEXT AND IMAGES CONTAINED IN THIS DOCUMENT ARE PROPRIETARY AND MAY NOT BE SHARED, MODIFIED, DISTRIBUTED, REPRODUCED, OR REUSED WITHOUT THE EXPRESS WRITTEN PERMISSION OF NATIONAL RAMP.</small>	Revision:
	Date: 10/2/19
Drawn: PM	Approved:
Scale: 1:45	Sheet 3 of 3