

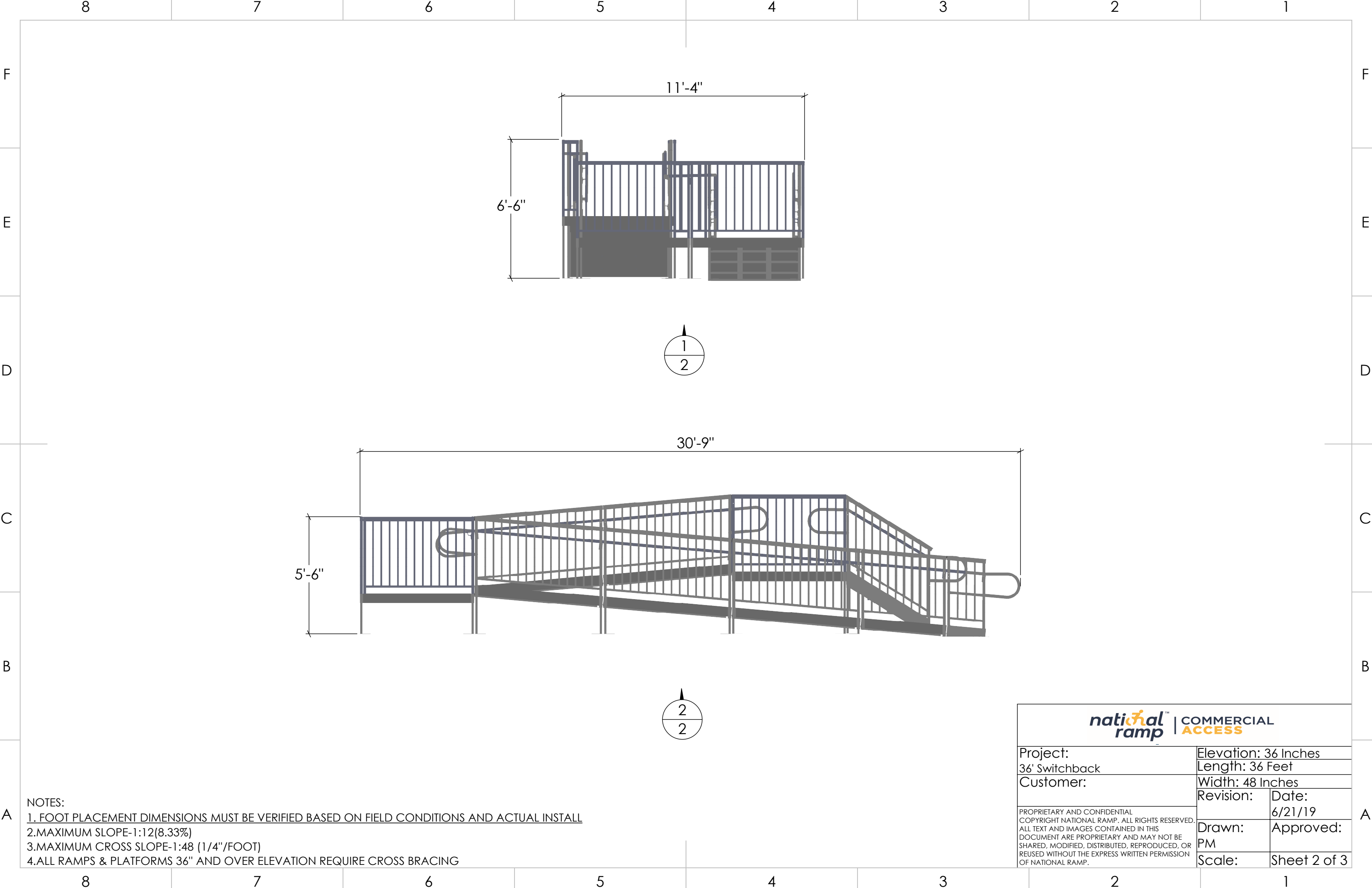
NOTES:

1. FOOT PLACEMENT DIMENSIONS MUST BE VERIFIED BASED ON FIELD CONDITIONS AND ACTUAL INSTALL

2. MAXIMUM SLOPE-1:12 (8.33%)

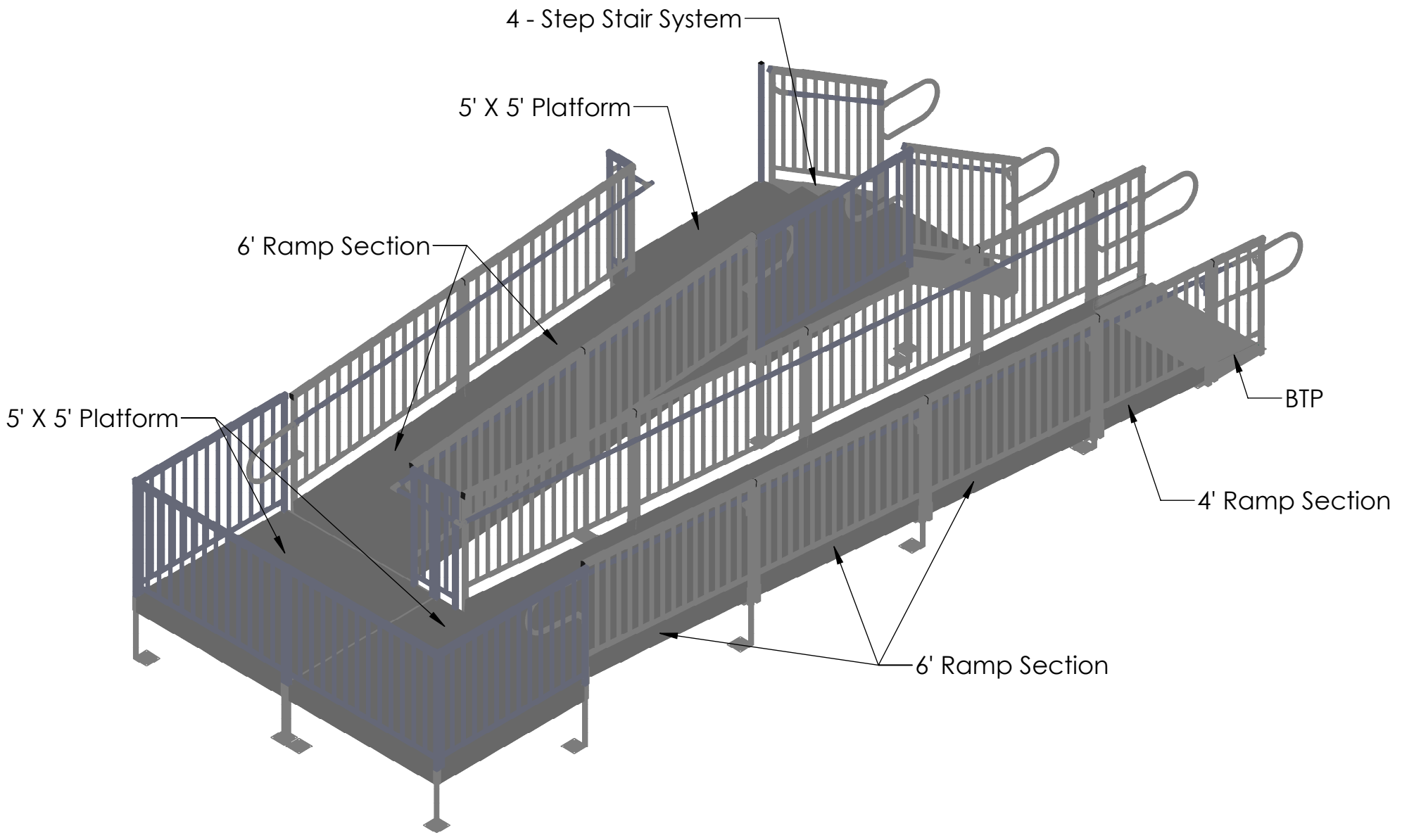
3. MAXIMUM CROSS SLOPE-1:48 (1/4"/FOOT)

4. ALL RAMPS & PLATFORMS 36" AND OVER ELEVATION REQUIRE CROSS BRACING



- NOTES:
- 1. FOOT PLACEMENT DIMENSIONS MUST BE VERIFIED BASED ON FIELD CONDITIONS AND ACTUAL INSTALL
  - 2. MAXIMUM SLOPE-1:12(8.33%)
  - 3. MAXIMUM CROSS SLOPE-1:48 (1/4"/FOOT)
  - 4. ALL RAMPS & PLATFORMS 36" AND OVER ELEVATION REQUIRE CROSS BRACING

<div><div><div><div></div><div>nati</div><div>onal</div></div><div>ramp</div></div><div><div>COMMERCIAL</div><div>ACCESS</div></div></div>			
Project:		Elevation: 36 Inches	
36' Switchback		Length: 36 Feet	
Customer:		Width: 48 Inches	
PROPRIETARY AND CONFIDENTIAL COPYRIGHT NATIONAL RAMP. ALL RIGHTS RESERVED. ALL TEXT AND IMAGES CONTAINED IN THIS DOCUMENT ARE PROPRIETARY AND MAY NOT BE SHARED, MODIFIED, DISTRIBUTED, REPRODUCED, OR REUSED WITHOUT THE EXPRESS WRITTEN PERMISSION OF NATIONAL RAMP.		Revision:	Date:
			6/21/19
		Drawn: PM	Approved:
		Scale:	Sheet 2 of 3



- NOTES:
- 1. FOOT PLACEMENT DIMENSIONS MUST BE VERIFIED BASED ON FIELD CONDITIONS AND ACTUAL INSTALL
  - 2. MAXIMUM SLOPE-1:12(8.33%)
  - 3. MAXIMUM CROSS SLOPE-1:48 (1/4"/FOOT)
  - 4. ALL RAMPS & PLATFORMS 36" AND OVER ELEVATION REQUIRE CROSS BRACING

<div><div><div>nati</div><div>onal</div><div>ramp</div></div><div>COMMERCIAL ACCESS</div></div>			
Project:		Elevation: 36 Inches	
36' Switchback		Length: 36 Feet	
Customer:		Width: 48 Inches	
PROPRIETARY AND CONFIDENTIAL COPYRIGHT NATIONAL RAMP. ALL RIGHTS RESERVED. ALL TEXT AND IMAGES CONTAINED IN THIS DOCUMENT ARE PROPRIETARY AND MAY NOT BE SHARED, MODIFIED, DISTRIBUTED, REPRODUCED, OR REUSED WITHOUT THE EXPRESS WRITTEN PERMISSION OF NATIONAL RAMP.		Revision:	Date:
		6/21/19	
		Drawn: PM	Approved:
Scale: 1:40		Sheet 3 of 3	